

Let us design a
Stoelting Conveyorized Parts Washer
to meet your specific needs.



Stand Alone Conveyorized Dryers/Ovens/Blowoffs for parts drying, curing, and solution stripping applications.



Wide-body Belt Washer for larger parts, sheet metal cleaning or high production multi-lane applications (machine shown has a 64" wide belt).



Dual-Strand Conveyor Washer accepts parts fixtured on pallets, in baskets, or stand-alone, for easy transfer and cleaning.



Multi-Stage Washer with Return Conveyor for the tough cleaning jobs such as buffing compounds. Return conveyor for automation.



Dunnage Tray Washer in monorail configuration for easy handling.



502 Highway 67 • Kiel, Wisconsin 53042-1600
Tel: (920) 894-2293 • 800-545-0661 • Fax: (920) 894-7029
E-mail: industrial@stoelting.com
Web site: www.stoelting.com

Printed in the U.S. 7/00 5M

OmniForce



**Conveyorized
Industrial Parts
Washer**

 **STOELTING**
A Stainless Reputation.

STOELTING® *A Powerful Force* in Industrial Parts Cleaning

Stoelting is the choice of industry leaders. We have earned the confidence of Fortune 500 companies by meeting the challenges of even the toughest cleaning jobs.



Wet Zone

Tapered inside roof provides improved water run-off and steam ventilation system with separate vent fans for accurate mist control.

1. The Stoelting OmniForce featuring all 304 stainless steel construction for low maintenance and long life. Sleek design for aesthetic appearance.
2. Hinged, removable canopy doors for easy access to wet zone.
3. Shed sheet below belt directs 100% of solution spray to an easy lifting, angled chip basket for effective filtration.
4. Drag-out zones designed into each module to minimize cross contamination of wet stages.
5. Heated blowoff chamber with high velocity, high volume, adjustable air knives for faster, more complete drying. Removable doors for easy access to internal chamber.
6. Frame support under machine for easy handling.



Right Side View



Left Side View

1. Stainless steel belt ranging in widths from 12" to 108" to handle a wide variety of cleaning applications.
2. Sloped tank bottom for easy draining and clean out.
3. Operator control panel includes Allen-Bradley processor as standard. (Panelview Touchscreen optional).
4. Adjustable socket valves with liquid gauges to control and monitor spray pressures.
5. Vertically mounted pumps for ease of maintenance.
6. Choice of electric, gas or steam heat (gas depicted) for flexibility.
7. Welded stainless steel piping and valves provide leak-proof connections.
8. Electrical wireways are NEMA-12 rated for operational safety and ease of maintenance.



Energy Efficient Solution Tank

Recirculated water flow is directed uniformly across heater elements to eliminate hot/cold spot conditions for efficient energy use. Tank baffles create a "quiet zone" for application of oil separators (skimmers, coalescers, ultra filtration and centrifuge systems).

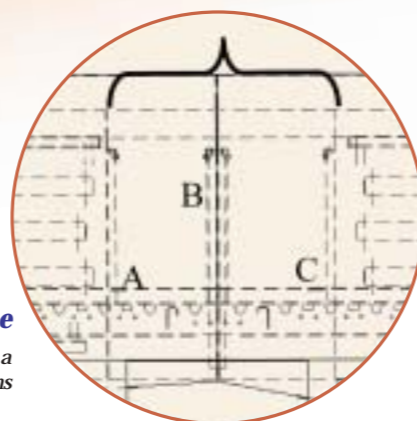


Spray Pattern

High impact spray system featuring Stoelting exclusive spray tube design allows for maximum GPM of wash solution.

Dragout Zone

3' dragout/chemical isolation zone includes a total of 4 isolation curtains



Energy Efficient Blowoff System

Stoelting engineered air plenum/knife system delivers a uniform flow of heated air (electric, gas or steam). Adjustable air knives for optimum drying.

